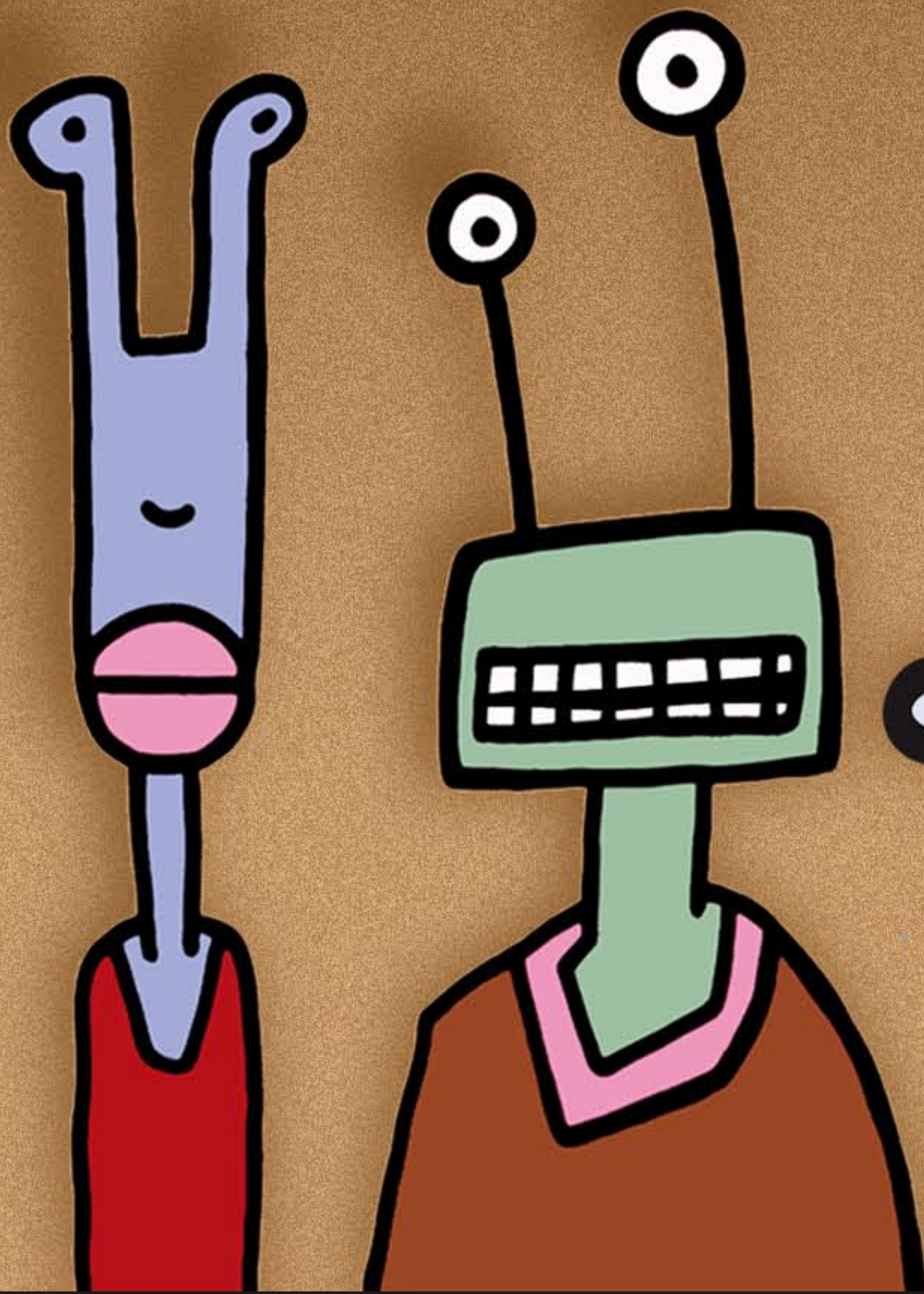


# The Second Poe Symposium

## INVADERS OF THE HUMAN BODY



We're  
infectious Aliens  
and can give you...

H5N1 avian influenza  
Plasmodium falciparum  
HIV/AIDS  
Chlamydia pneumoniae  
Epstein-Barr  
H. pylori  
Aspergillus

Friday April 28, 2006

12:30 pm to 5:30 pm

CSU Channel Islands - Aliso Hall Auditorium - One University Drive, Camarillo

### ADMISSION:

There is no charge to attend this event.

### PARKING:

\$6.00 (campus parking day pass)

### RSVP by April 25th:

Please call (805) 437-2779

or email

[jessica.dalton@csuci.edu](mailto:jessica.dalton@csuci.edu)

### FOR PROGRAM INFO:

<http://biology.csuci.edu/poe2>



CALIFORNIA STATE UNIVERSITY  
CHANNEL ISLANDS

### OPENING REMARKS:

Richard R. Rush, Ph.D.

President CSUCI

Nicole Bournias-Vardiabasis, Ph.D.

Director Biotechnology and Bioinformatics  
MS Program, CSUCI

### FEATURING:

Laurie Zoloth, Ph.D.

Center for Genetic Medicine, Northwestern University

James Anthony, Ph.D.

University of California, Irvine

Lauren Pecorino, Ph.D.

University of Greenwich, UK

Edith Porter, M.D.

California State University, Los Angeles

Dianne Langford, Ph.D.

University of California, San Diego

James Ito, M.D.

City of Hope Medical Center

Tom Scott, Ph.D.

University of California, Berkeley